



INDOFINE Chemical Company, Inc.

121 Stryker Lane, Bldg. 30, Suite 1 • Hillsborough, NJ 08844 • U.S.A.

Phone: (908) 359-6778 • FAX: (908) 359-1179

website: www.indofinechemical.com

e-mail: chemical@indofinechemical.com

Certificate of Analysis

Product	31-1812	2-Monoolein
Lot no	O 305:10	
Mw	356.5	
Purity	>98% with GC	
Storage	-80C Freezer	



INDOFINE Chemical Company, Inc.

121 Stryker Lane, Bldg. 30, Suite 1 • Hillsborough, NJ 08844 • U.S.A.

Phone: (908) 359-6778 • FAX: (908) 359-1179

website: www.indofinechemical.com

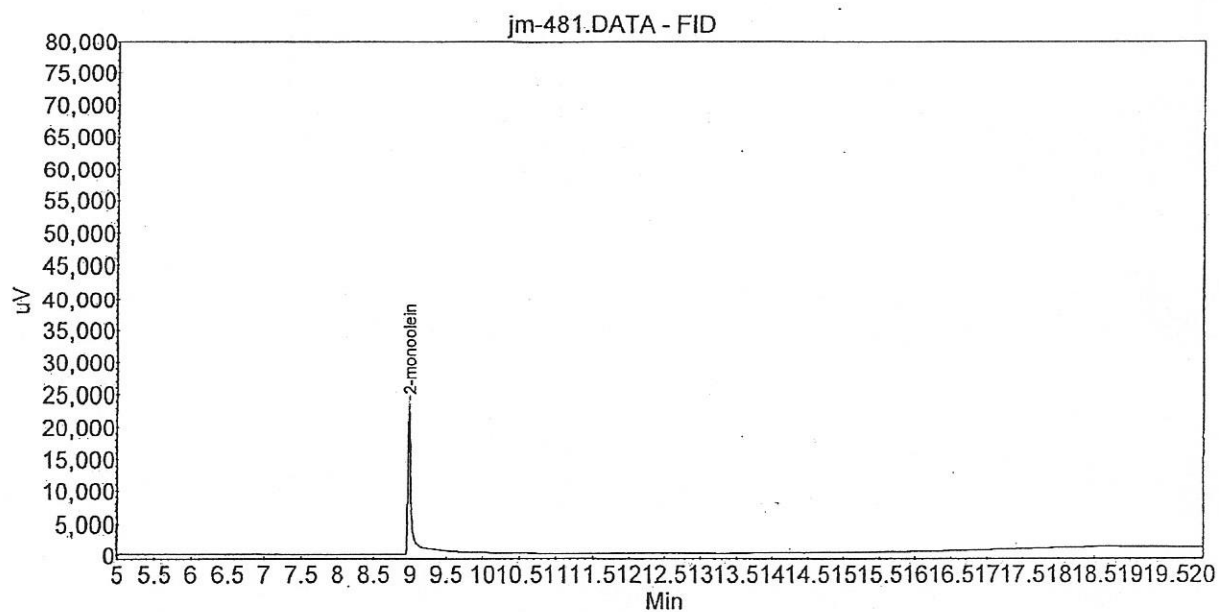
e-mail: chemical@indofinechemical.com

GC ANALYSIS

Catalog No.: 31-1812
Product Name: 2-Monoolein
Lot No.: O 305:10

Chromatogram : jm-481

System : GC1
Method : Monoolein GC1
User : Juan



Peak results :

Index	Name	Time [Min]	Quantity [%Area]	Height [uV]	Area [uV.Min]	Area % [%]
1	2-monoolein	8.99	100.00	23297.8	1434.6	100.000
Total			100.00	23297.8	1434.6	100.000